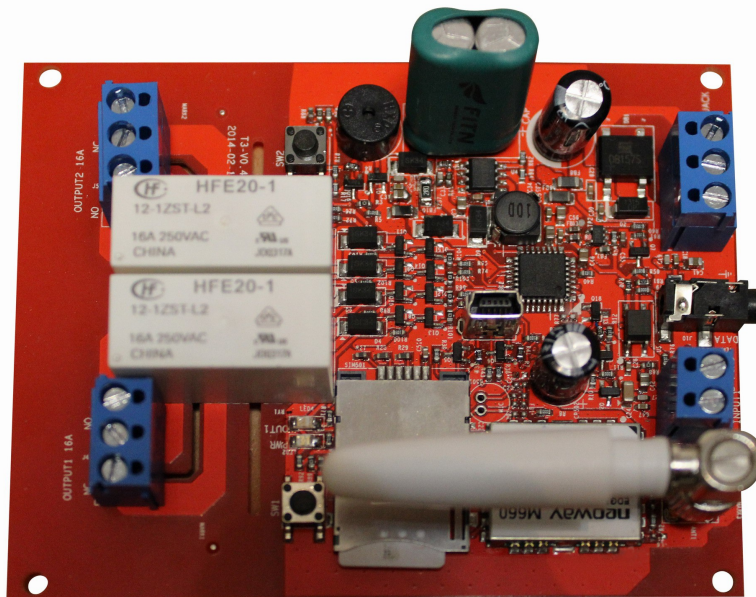


SimPal-T3 GSM Control Board



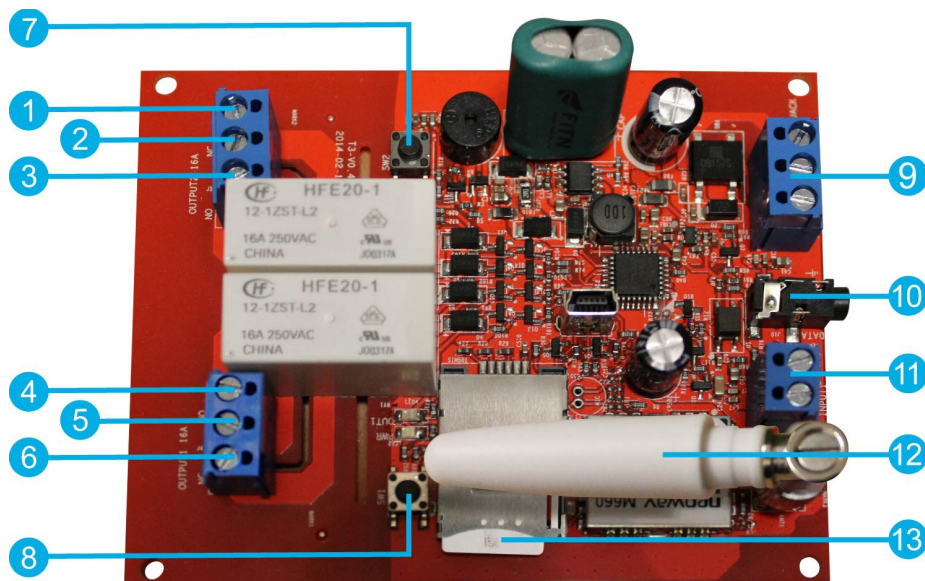
1. SimPal-T3 Introduction

SimPal-T3 is a remote control board, comes with one GSM module, two 16A latching relay. It can remotely control two lines on/off via GSM network. Allow you to control any electric appliances or control signals remotely over GSM network. The device support power lost/restore notification, one way wired sensor input, one way temperature sensor input. It can be working as GSM gate opener.

2. SimPal-T3 Product feature

- Working as GSM gate opener: two lines gate opener signal control. Free calling to open the gate. Can be set auto open the gate when wired sensor trigger.
- Remote power control: can be use to control power output by calling, max allow 16A 3500W. Can be set auto turn on power when wired sensor trigger.
- Thermostat control function: Make relay auto turn on/ off according to the temperature value, such as you set auto turn on the relay power when temperature reaches 27 degree.
- Timing control socket: Schedule to make the relay auto turn on/off according to your setting time.
- Power fail alarm: when the power fail, it will send SMS to your mobile phone to notify you power lost.

3. SimPal-T3 component instruction



- 1.) Line 2 NC connector 2.) Line 2 Live line input connector
 3.) Line 3 NO connector 4.) Line 1 NC connector 5.) Line 1 Live line input connector
 6.) Line 1 NO connector 7.) Line 2 manual button 8.) Line 1 manual button
 9.) GSM board AC/DC input 10.) Temperature sensor connector
 11.) Wired sensor connector 12.) GSM antenna 13.) SIM card slot

4. Technical parameters

Model:	SimPal-T3
GSM frequency:	850/900/1800/1900Mhz
Power input:	12VDC
Relay control:	SMS or calling to switch on/off
Relay type:	16A Latching relay 2pcs
Max loading:	16A / 3500W
Data interface:	GSM SIM 1.8V/3.0V socket;
Indicators:	Power/Line1 output/Line2 output/GSM/Temp/Sensor
Temperature sensor:	DS18B20, -30—100 degree.
Power board operating temperature:	-10~+50°C