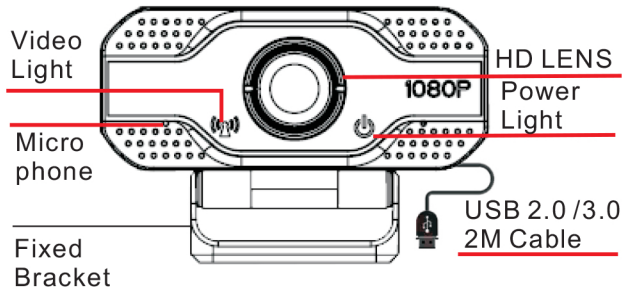


Webcam Quick Manual

*Please read this manual carefully and keep it in a safe place for future reference

A: Product Details

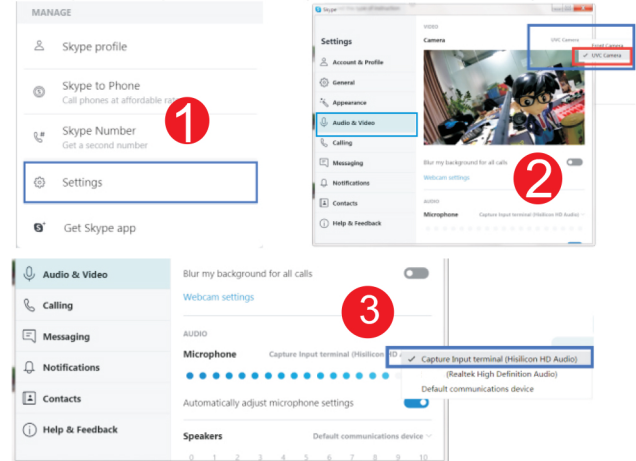


B: Plug and play



Note: If two Webcam
Example: SKYPE

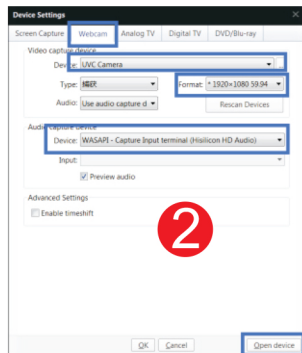
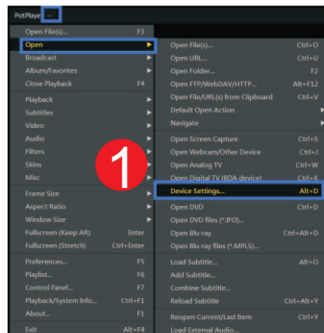
- 1: Settings
- 2: Audio & Video - UVC Camera
- 3: Capture Input terminal (Hisilicon HD Audio)



C: Webcam Setting

Download Software: Potplayer.
From Website: <https://potplayer.en.softonic.com/>

- 1: Open Video: Potplayer - Open - Device settings
- 2: Webcam - Device (UVC Camera) - Format (1920*1080 59.94) - Audio Device (WASAPI - Capture Input terminal (Hisilicon HD Audio)) - Open Device
- 3: More Setting



Q: Why is there no image when connected to the computer?
Answer: Please check the camera power indicator (red)?
Please replace the USB interface.

Q: Why are the images different?
A: Maybe your computer has two cameras, please choose UVC Camera.

Q: Why is there no sound from the microphone?
Answer: Please select the microphone:
WASAPI - Capture Input terminal (Hisilicon HD Audio)

Q: Why does the software show 1280 * 720P instead of 1920 * 1080P
Answer: Because some software does not support 1920 * 1080P, but automatically selects the best resolution.