

New OBD Smart PC Tool User Manual

V0.6



2013-07-30




Catalogue

| | |
|--------------------------|----|
| I Installation | 3 |
| II Configuration | 3 |
| 2.1 Main interface | 4 |
| 2.2 Alarms..... | 6 |
| 2.3 Network..... | 8 |
| 2.4 Regular Report..... | 9 |
| 2.5 Others | 11 |
| 2.6 Upgrade/Log..... | 14 |
| III FAQ..... | 16 |

I Installation

Copy" USB Driver "and "New OBD Smart PCTool" to your PC




Double Click on"  ", New OBD Smart PCTool will be installed automatically

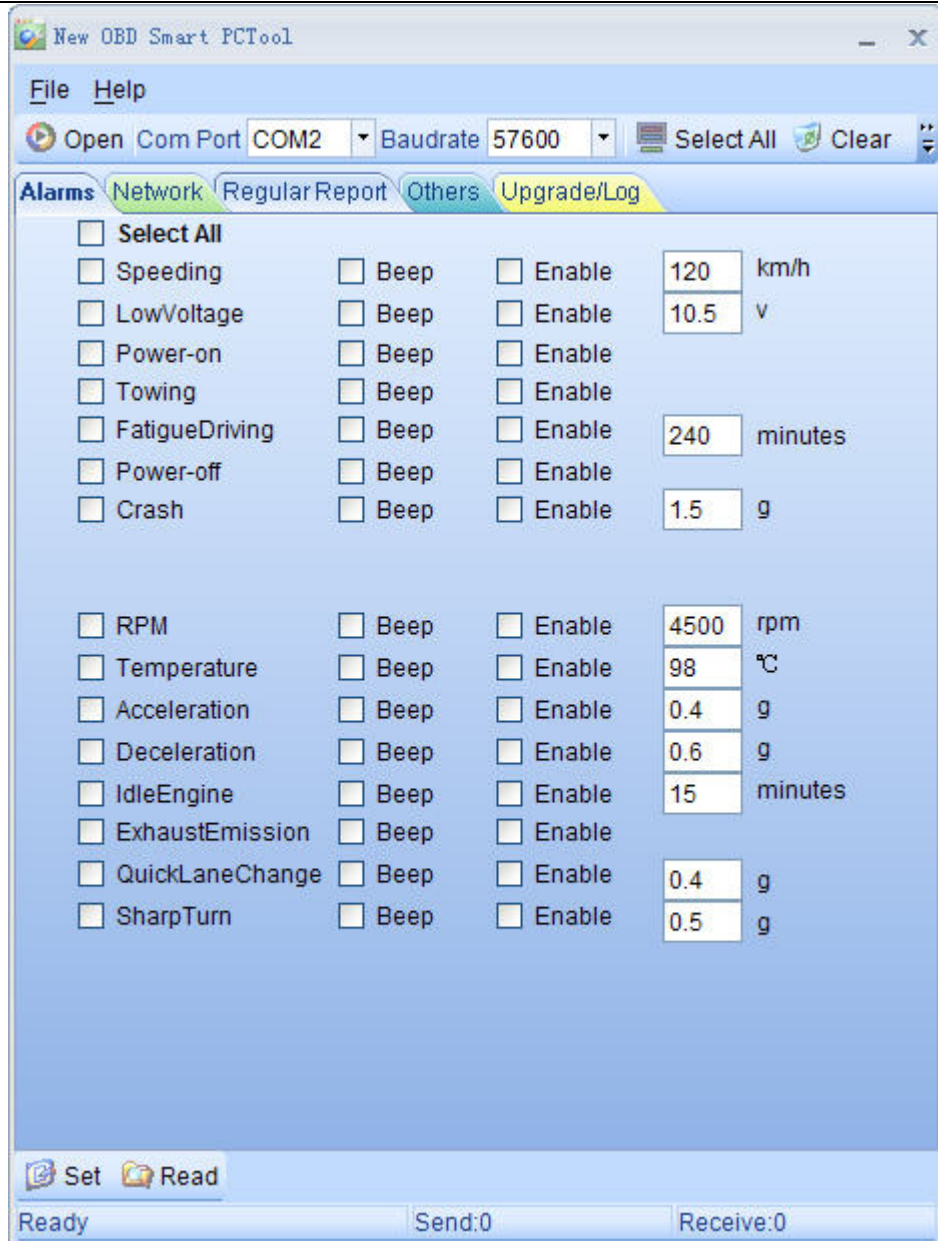
Note: USB driver should be installed before installing "New OBD Smart PCTool"

II Configuration

Connect the device to PC through USB configuration cable



Double click on"  " after hearing one beep, it will show below main interface

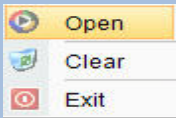
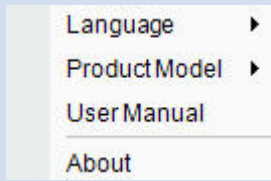



Note: If you start this software in Windows 7 or Windows 8 system, please right click its ICON, and click” **Run as administrator**”, or it will show the error.

2.1 Main interface

Select the correct serial port and baud rate (default is 115200), and then click on “open” button in the Tool bar to open the selected serial port.



| Item | Parameter(e.g.) | Explain | Note |
|---|---|--|---|
| File |  | 3 function buttons under "file" | Open: Open the serial port Clear: Clear the parameters Exit: Exit New OBD Smart PCTool |
| Help |  | Language: <input checked="" type="checkbox"/> English Simplified Chinese Products Model: <input checked="" type="checkbox"/> IDD-212GS/L IDD-213G MPIP-618 IDD-213T | Support English and Chinese currently |
| Open | Open/Close | To open or close the COM port | |
| Com Port | 4 | Get the COM port number after plugging the configuration cable | Which Com port is used can be checked under-"My computer"- "Manage"- "Device manage"- "Port"- "Prolific USB-to-Serial Comm. port" |
| Baud rate | 115200 | Baud rate is 115200 | Baud rate is fixed |
| Select All | | Select all parameters | |
| Clear | | Clear all parameters | |
|  | Other buttons, e.g.: Exit | Exit New OBD Smart PCTool | It will exit and re-login automatically after language changed |



| Item | Parameter(e.g.) | Explain | Note |
|-------|-----------------|---|--|
| Set | | Set the parameters | Click on "Set" after modify the parameters |
| Read | | Read the parameters which have been set | It's better for you to read before modify the parameters |
| Ready | | Ready for configuring the parameters | |
| Send | 0 | Numbers of commands sent | |

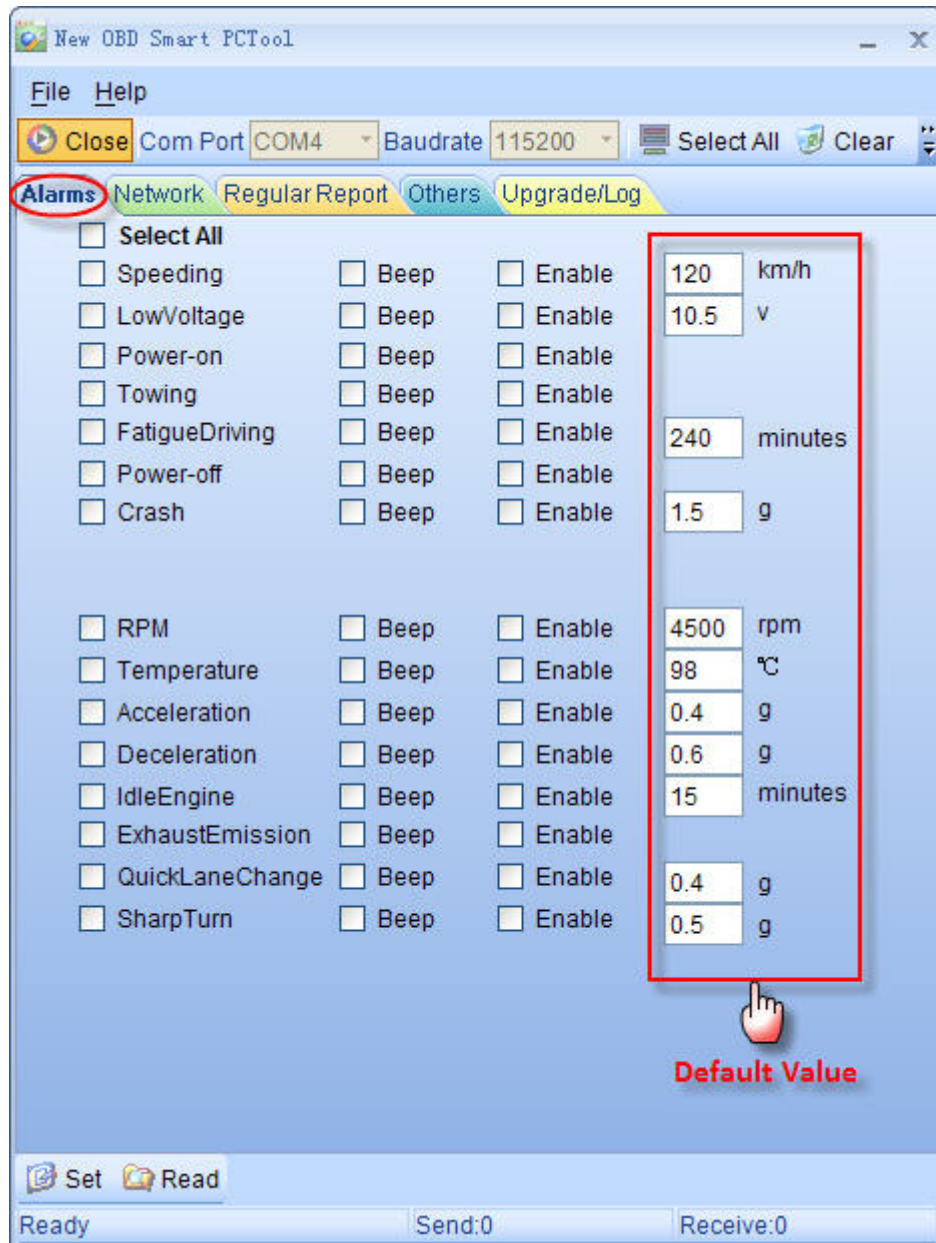


| | | | |
|---------|---|------------------------------|--|
| Receive | 0 | Numbers of commands received | |
|---------|---|------------------------------|--|

Note: Below function modules is taken an example of **IDD-212GS/L**

2.2 Alarms

Click on “Alarms” to select required items and click on “Read” to get parameters values first. For example: sound indication, enable/disable and threshold. Modify those values and click on “Set” to save new parameters into the device.



| Item | Parameter(e.g.) | Explain | Note |
|----------|-----------------|--|--|
| Speeding | 120 | Speeding alarm will be sent when the speed | Range: [0,300KM/H], default is 120KM/H |

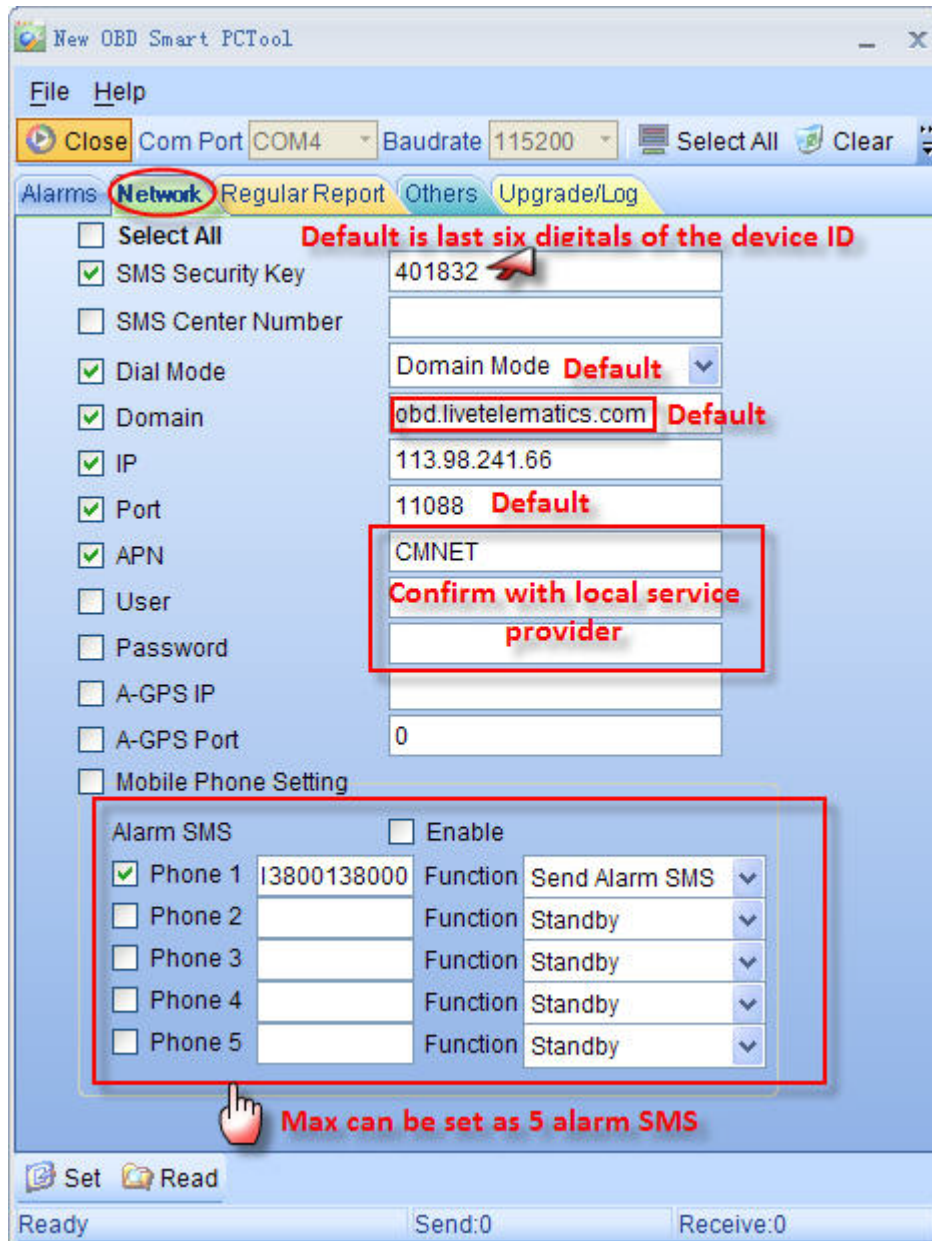


| | | | |
|-------------------------|--------|---|---|
| | | up to 120Km/H | |
| Low voltage | 10.5 | Low voltage alarm will be sent when the voltage drop to 10.5V | Range:[9,36V], default is 10.5V, unit is 0.1V |
| Power-on | Enable | Power-on alarm will be sent when it's power on | Default is enable |
| Towing | Enable | Towing alarm will be sent when the vehicle is towed | Default is enable |
| Fatigue Driving | 240 | Fatigue Driving alarm will be sent when drive last for 240min | Range:[1,480min], default is 240min |
| Power-off | Enable | Power-off alarm will be sent when it's power-off | Default is enable |
| Crash | 1.5 | Crash alarm will be sent when accelerated speed up to 1.5g | Range:[1.0,2.0g], default is 1.5g, unit is 0.1g |
| RPM | 4500 | RPM alarm will be sent when the RPM up to 4500rpm | Range:[0,10000rpm], default is 4500rpm |
| Temperature | 98℃ | Temperature alarm will be sent when the temperature up to 98℃ | Range:[-40-200℃], default is 98℃ |
| Acceleration | 0.4g | Acceleration alarm will be sent when accelerated speed up to 0.4g | Range:[0.2,0.8g], default is 0.4g, unit is 0.1g |
| Deceleration | 0.6g | Deceleration alarm will be sent when accelerated speed up to 0.6g | Range:[0.3,1g], default is 0.6g, unit is 0.1g |
| Idle Engine | 15 | Idle Engine alarm will be sent when the time last for 15min after the vehicle stops before ignition off | Range:[1,30min], default is 15min, unit is min |
| Exhaust Emission | Enable | Exhaust Emission alarm will be sent when engine emesis | Default is enable |
| Quick Lane | 0.4g | Quick Lane Change | Range:[0.2,0.8g], default is |

| | | | |
|-------------------|------|---|--|
| Change | | alarm will be sent when accelerated speed up to 0.4g | 0.4g, unit is 0.1g |
| Sharp Turn | 0.5g | Sharp Turn alarm will be sent when accelerated speed up to 0.5g | Range: [0.3,0.9g], default is 0.5g, unit is 0.1g |

2.3 Network

Click on “Network” to select required items and click on “Read” to get parameters values first. Modify those values and click on “Set” to save new parameters into the device.



New OBD Smart PCTool

File Help

Close Com Port COM4 Baudrate 115200 Select All Clear

Alarms **Network** Regular Report Others Upgrade/Log

☐ Select All **Default is last six digitals of the device ID**

☒ SMS Security Key 401832

☐ SMS Center Number

☒ Dial Mode Domain Mode **Default**

☒ Domain obd.livetelematics.com **Default**

☒ IP 113.98.241.66

☒ Port 11088 **Default**

☒ APN CMNET **Confirm with local service provider**

☐ User

☐ Password

☐ A-GPS IP

☐ A-GPS Port 0

☐ Mobile Phone Setting

Alarm SMS ☐ Enable

☒ Phone 1 13800138000 Function Send Alarm SMS

☐ Phone 2 Function Standby

☐ Phone 3 Function Standby

☐ Phone 4 Function Standby

☐ Phone 5 Function Standby

Max can be set as 5 alarm SMS

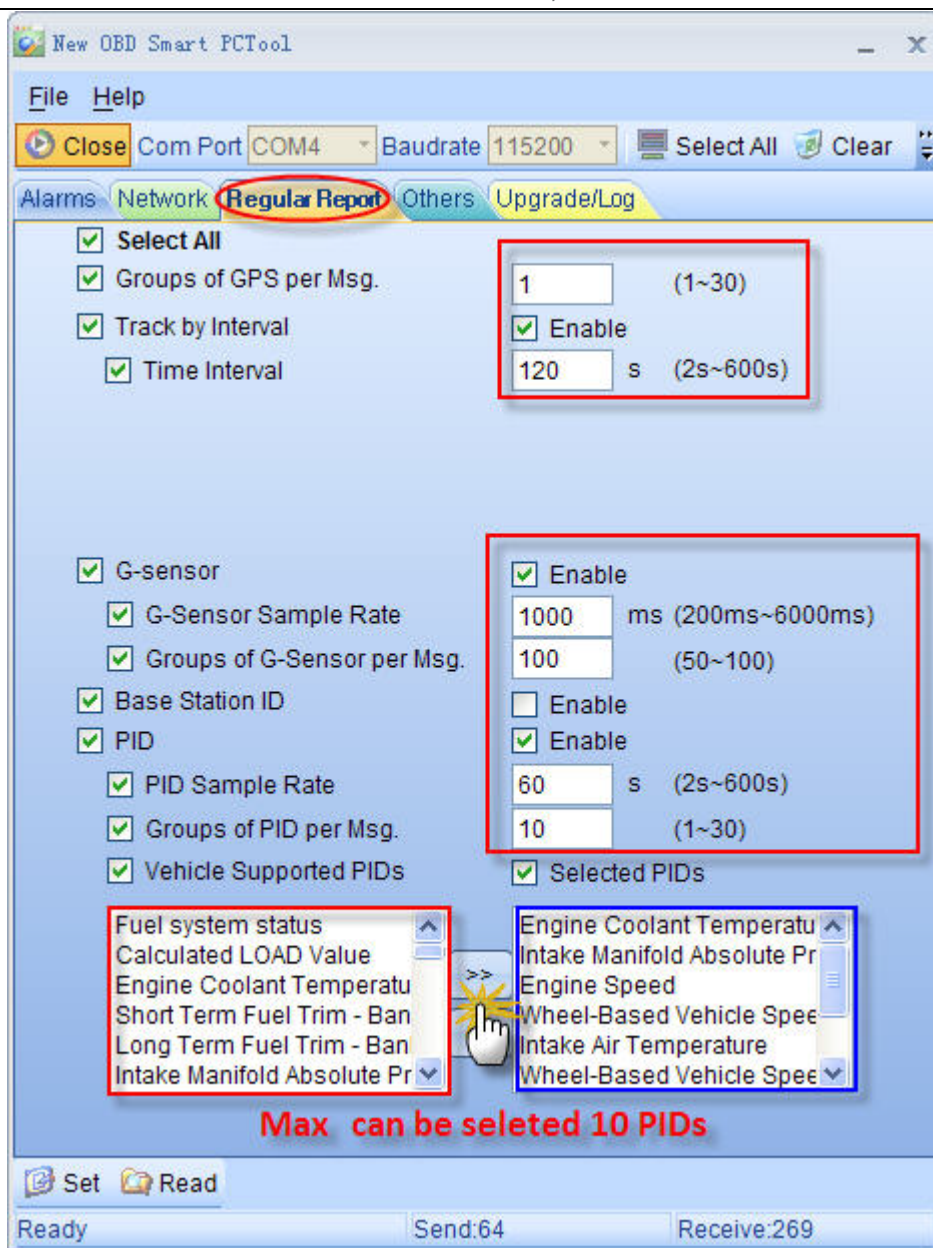
Set Read

Ready Send:0 Receive:0

| Item | Parameter(e.g.) | Explain | Note |
|-----------------------------|------------------------|--|---|
| SMS Security key | 401832 | | It adopts ASCII code, default is last six digitals of the device ID |
| SMS center number | 13800138000 | Set SMS center number to receive location and command replied message | |
| Dial Mode | IP mode | IP mode or domain mode can be chosen | Domain mode is default |
| Domain | obd.livetelematics.com | Set the domain instead of IP address | Default domain is obd.livetelematics.com |
| IP | 113.98.241.66 | Server IP address | Default IP is 113.98.241.66 |
| Port | 11088 | TCP port | default is 11088 |
| APN | CMNET | China mobile GPRS access point name | Please ask the GPRS service provider to get it |
| User | | The User of APN | Please ask the GPRS service provider to get it |
| Password | | The password of APN | Please ask the GPRS service provider to get it |
| A-GPS IP | | IP address of A-GPS server | |
| A-GPS Port | | Port of A-GPS server | |
| Mobile Phone setting | 13800138000 | Set Alarm SMS to get alarm message, call & auto answer or call & awake | Can be set max 5 SMS numbers, it's better to add country code |

2.4 Regular Report

Click on “Regular Report” to select required items and click on “Read” to get parameters values first. Modify those values and click on “Set” to save new parameters into the device.



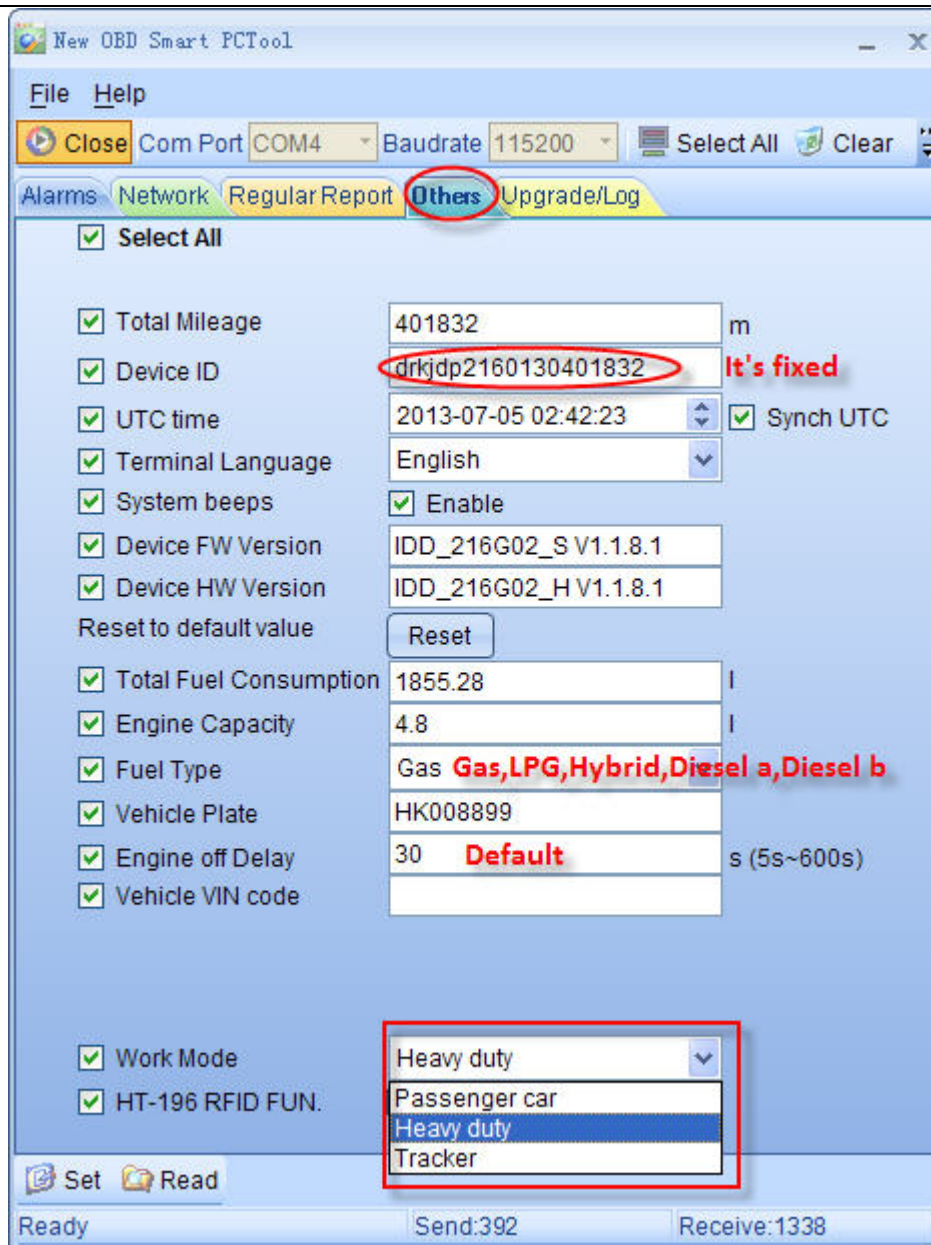
| Item | Parameter(e.g.) | Explain | Note |
|------------------------|-----------------|--|--|
| Groups of GPS per Msg. | 1 | It will sample one group of GPS data | Range:[1,30], default is 1, unit is group |
| Track by Interval | Enable | Enable track by interval function | Default is enable |
| Time Interval | 120 | GPS data is sampled per 120S | Range:[2,600], default is 120S, unit is second |
| G-Sensor | Disable | Disable G-sensor function | Default is disable |
| G-sensor Sample Rate | 1000 | G-sensor data will be sampled per 1000ms | Range:[200,6000ms], default is 1000ms, unit is millisecond |



| | | | |
|------------------------------------|---------------------|---|---|
| Groups of G-Sensor per Msg. | 100 | It will sample 100 pieces of G-sensor data | Range:[50,250], default is 100, unit is group |
| Base Station ID | Enable | It will support base station location after it's enable | Default is disable |
| PID | Disable | Disable PID function switch | Default is disable |
| PID Sample Rate | 60 | PID data is sampled per 60S | Range:[2,600], default is 60S, unit is second |
| Groups of PID per Msg. | 10 | It will sample 10 pieces of PID data | Range:[1,30], default is 10, unit is group |
| Vehicle Supported PIDs | | PIDs types vehicle supported | It will show the PIDs types vehicle supported |
| Selected PIDs | PIDs types selected | PIDs types selected | Range:[1,10] |

2.5 Others

Click on "Others" to select required items and click on "Read" to get parameters values first. Modify those values and click on "Set" to save new parameters into the device.



| Item | Parameter(e.g.) | Explain | Note |
|-------------------|---------------------|---|---|
| Total mileage | 401832 | Set the cumulative mileage of current OBD vehicle | Unit is meter |
| Device ID | drkjdp2160130401832 | Device ID is drkjdp2160130401832 | Can't be set by software platform, just supports serial port setting, it's fixed. |
| UTC time | 2013-07-05 02:42:23 | To synch UTC time | Set device time |
| Terminal Language | English | SMS replied in English | Support English and Chinese currently |

| | | | |
|-------------------------------|---------------------------|--|--|
| System beeps | Enable | Enable system beeps | Default is enable |
| Device FW Version | IDD_216G02_S V1.1.8.1 | Firmware version | The tag just can be red and can't be set |
| Device HW Version | IDD_216G02_SH V1.1.8.1 | Hardware version | The tag just can be red and can't be set |
| Reset to default value | | Reset to default value | |
| Total Fuel Consumption | 1855.28 | Set the cumulative fuel consumption of current OBD vehicle | Unit is 0.01L |
| Engine Capacity | 4.8 | Set engine capacity as 4.8L | Unit is 0.1L Please refer to Note 1 when select Diesel B |
| Fuel Type | Gas | Fuel type is Gas | Includes Gas, LPG, Hybrid, Diesel a and Diesel b |
| Vehicle Plate | HK008899 | Vehicle Plate is HK008899 | Max length can be up to 50bytes |
| Engine off Delay | 30 | The delay time of engine off is 30 seconds | Range:[5-600], default is 30S, unit is second |
| Vehicle VIN code | | | The tag just can be red and can't be set |
| Word mode | Passenger car | It supports passenger car, heavy duty, tracker | Default is passenger car mode |
| HT-196 RFID FUN. | Enable | Enable HT-196 RFID FUN. | Default is enable |

Note 1: When diesel B is selected, need to set the actual engine capacity if the firmware version of IDD-212GL/GS before V1.1.9; Don't fill actual engine capacity value if it's for IDD-213GL/GS and the firmware version of IDD-212GL/GS after V1.1.8, the regulation factor of algorithm for Diesel consumption should be filled, default is **10.0** (it means calculate results will not be adjusted).

The algorithm way of regulation factor: fill up fuel after OBD device is installed, record the fuel consumption via OBD device and count the actual fuel consumption during the period of time.

The formula: $(1 - (\text{fuel consumption via OBD device} - \text{actual fuel consumption}) / \text{fuel consumption via OBD device}) * 10$

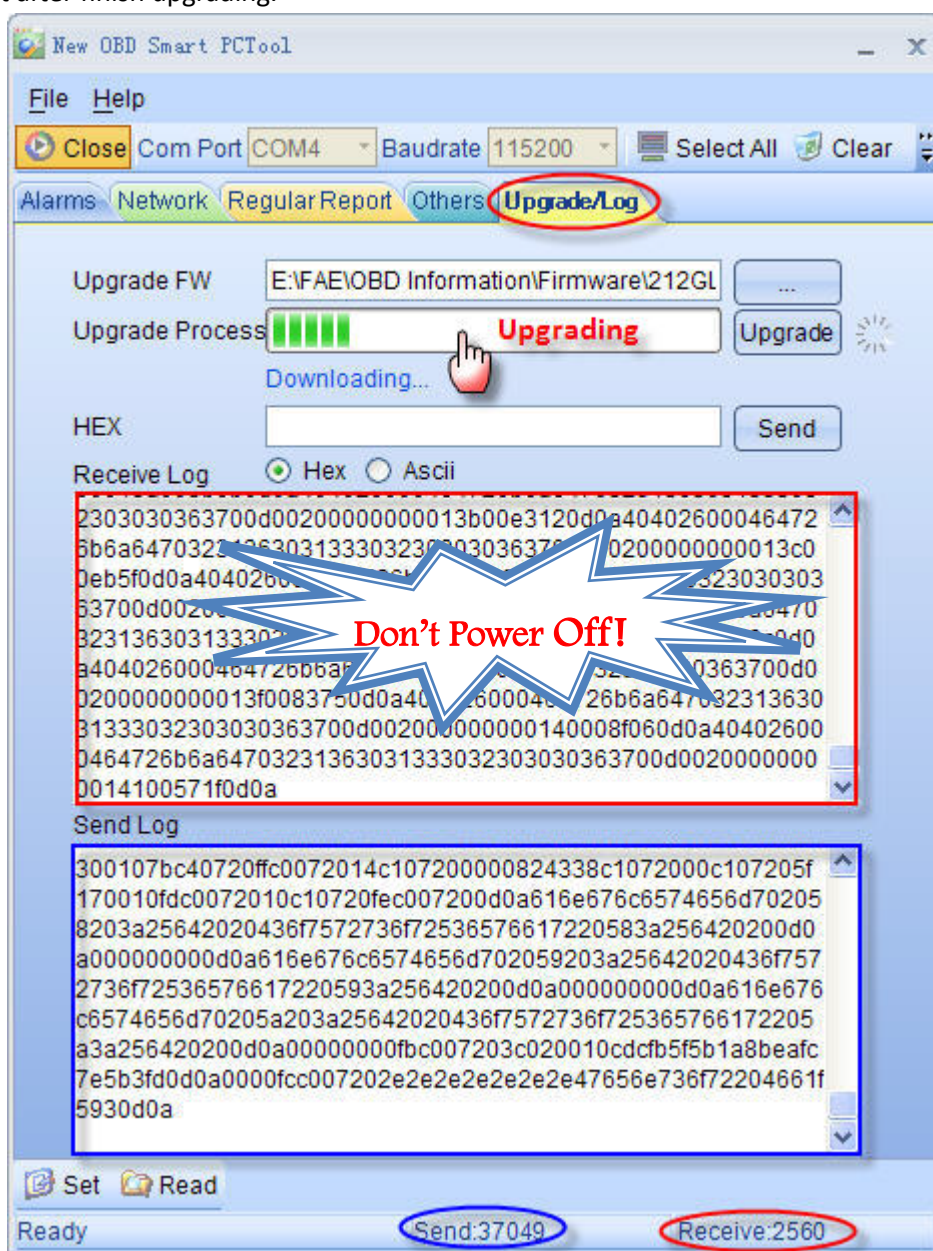
e.g.: The fuel consumption is 128L counted via software platform, and the actual fuel consumption is 115L during the same period of time. Then the regulation factor is:

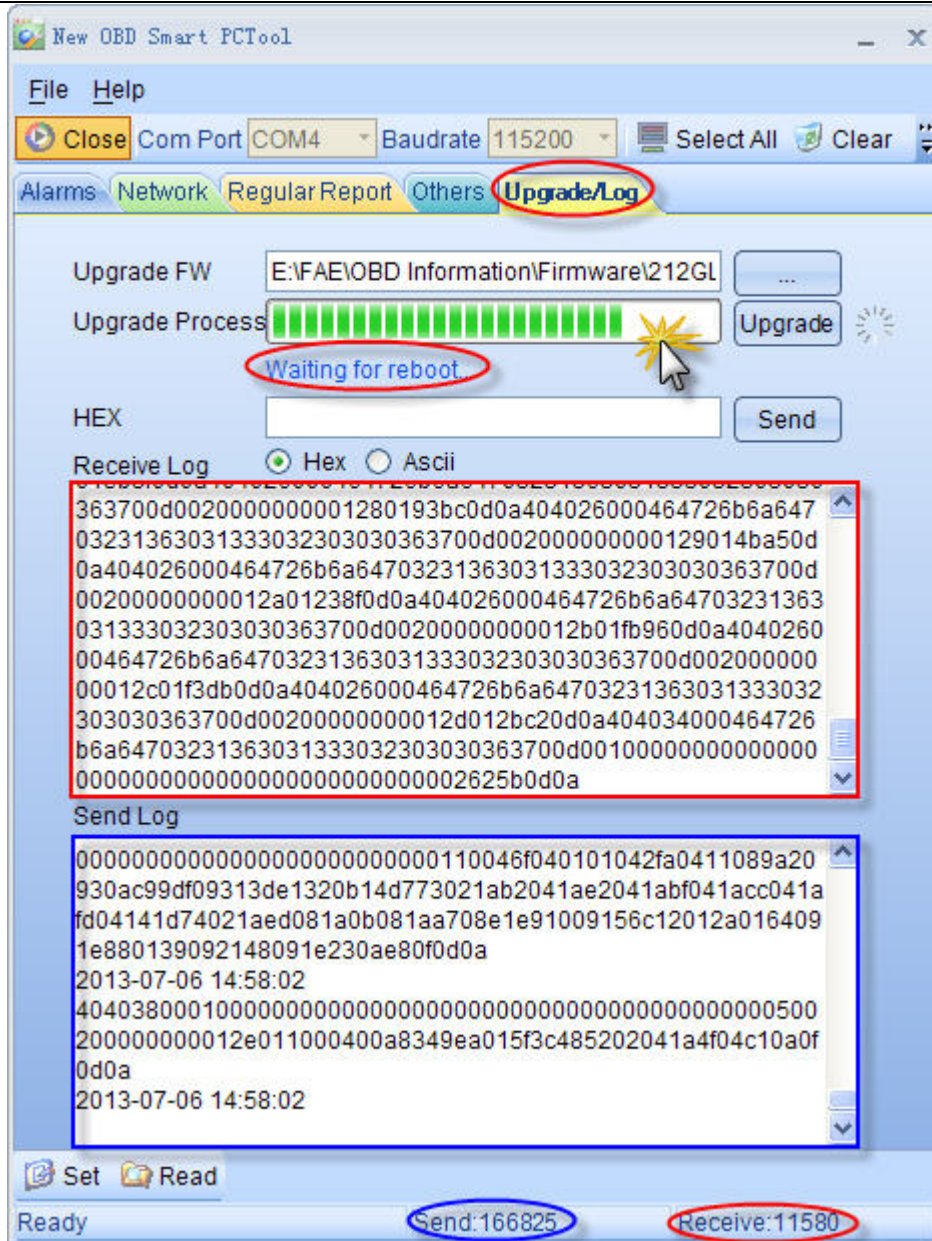
$(1 - (128 - 115) / 128) * 10 = 8.985$ take a decimal as **8.9**, then the engine capacity should be

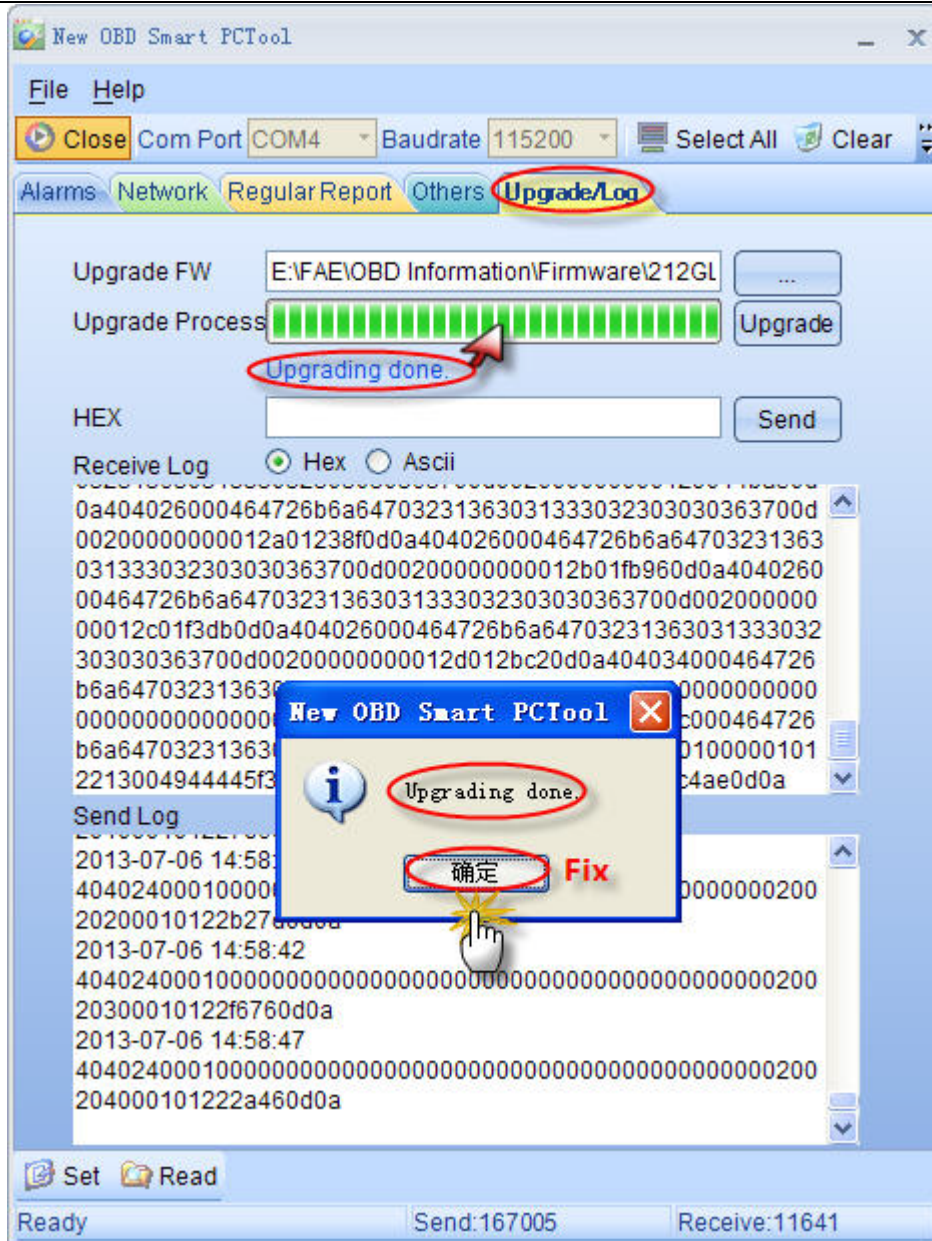
filled as 8.9

2.6 Upgrade/Log

Click on “Upgrade/Log”, click on “...” button to select bin file, and then click “Upgrade” button to upgrade the firmware to the new version. There is a pop window prompt after finish upgrading.







Note: Please **don't power off** when it's upgrading, or the program will be damaged. It will reboot automatically after finish downloading then finish the upgrading.

III FAQ

A: Why the New OBD Smart PCTool can't be installed

B: USB driver should be installed before installing New OBD Smart PCTool

A: Why the terminal is no response when modify the parameters

B: configuration cable, Com port and baud should be selected correct